

Flanschkugelhahn, Edelstahl/ Flanged ball valve, stainless steel PA-19D-F1.266.P / 19D-F1.466.P

Technische Daten

Bauform
 2-teilig
 Voller Durchgang
 Mit Handhebel
 Mit ISO-Direktaufbauflansch
 Baulänge nach DIN 3202 F1
 Gehäuse: Edelstahl 1.4408
 Kugel: Edelstahl 1.4408
 Dichtung: TFM-1600

Specification

Design
 2-piece
 Full port
 With handle
 With ISO-Directmountingpad
 Face to face according to DIN 3202 F1
 Body: 1.4408
 Ball: 1.4408
 Seat: TFM-1600

Anschluss

Beidseitig Flansche
 DN 15 – DN 100

Connection

Flanged Ends
 DN 15 - DN 200

Betriebsdruck

PN 40, ab DN 65 PN 16 oder PN 40

Pressure Range

PN 40, from DN 65 PN 16 or PN 40

Betriebstemperatur

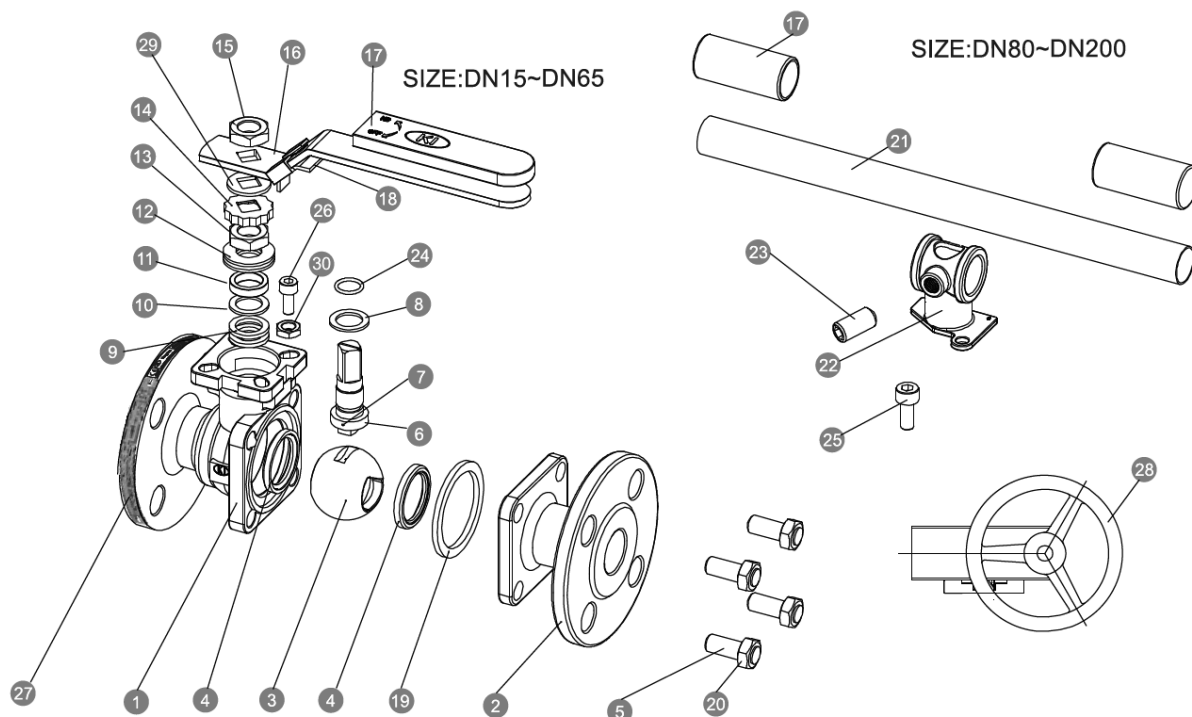
max. 180°C

Temperature Range

max. 180°C

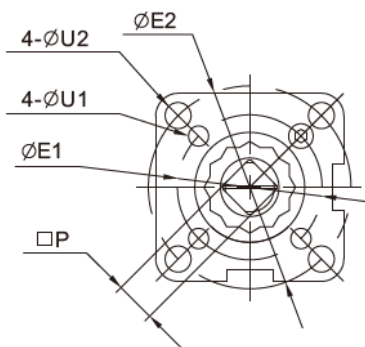


F1-Baulänge
FIRE-SAFE
TA-LUFT
ATEX



NO.	Part Name	Materials
1	Body	1.4408
2	Cap	1.4408
3	Ball	1.4408
4	Ball seat	TFM-1600
5	Bolt	A2-70
6	Stem	316
7	Anti-Static	316
8	Thrust washer	PTFE
9	Stem packing	PTFE
10	Bushing	50%SS+50%PTFE / 304*
11	Gland	316
12	Belleville washer	301
13	Stem nut	A194-8
14	Stop-lock-cap	304
15	Handle nut (DN15 - DN65)	A194-8
16	Lever (DN15 - DN65)	304
17	Handle sleeve	304
18	Lock device (DN15 - DN65)	304
19	Body gasket	PTFE
20	Bolt nut	A2-70
21	Pipe handle (DN80 - DN200)	A53+Plated Zn
22	Handle Adapter (DN80 - DN200)	A351-CF8
23	Set screwed (DN80 - DN200)	A2-70
24	O-Ring	FKM (VITON)
25	Bolting (DN80 - DN200)	A2-70
26	Stop Bolt	A2-70
27	Nameplate	304
28	Worm gear (optional)	Package
29	Support washer	304
30	Stop nut	A2-70

Direct Mount Pad (ISO 5211)



Pipe Handle Operation

SIZE : DN80 ~ DN200

