

Doppelflanschklappe in K1-Kurzbaulänge/ Double flange butterfly valve

PA-1170

Technische Daten

Bauform

Ab DN 250 erhältlich
 Baulänge nach EN 558-1 (K1)

Mit Handrad
 Topflansch nach ISO 5211

Mit Schneckenradgetriebe
 Gehäuse: GGG-50 EKB
 Scheibe: Edelstahl 1.4408
 Dichtung: EPDM

Specification

Design

Available from DN 250
 Face to face according to EN 558-1 (K1)

With handwheel
 Topflange according to ISO 5211

With worm gear
 Body: GGG-50 EKB
 Disc: stainless steel 1.4408
 Seat: EPDM

Anschluss

Passend für Flansche PN 10 (PN 16 auf Anfrage)

Connection

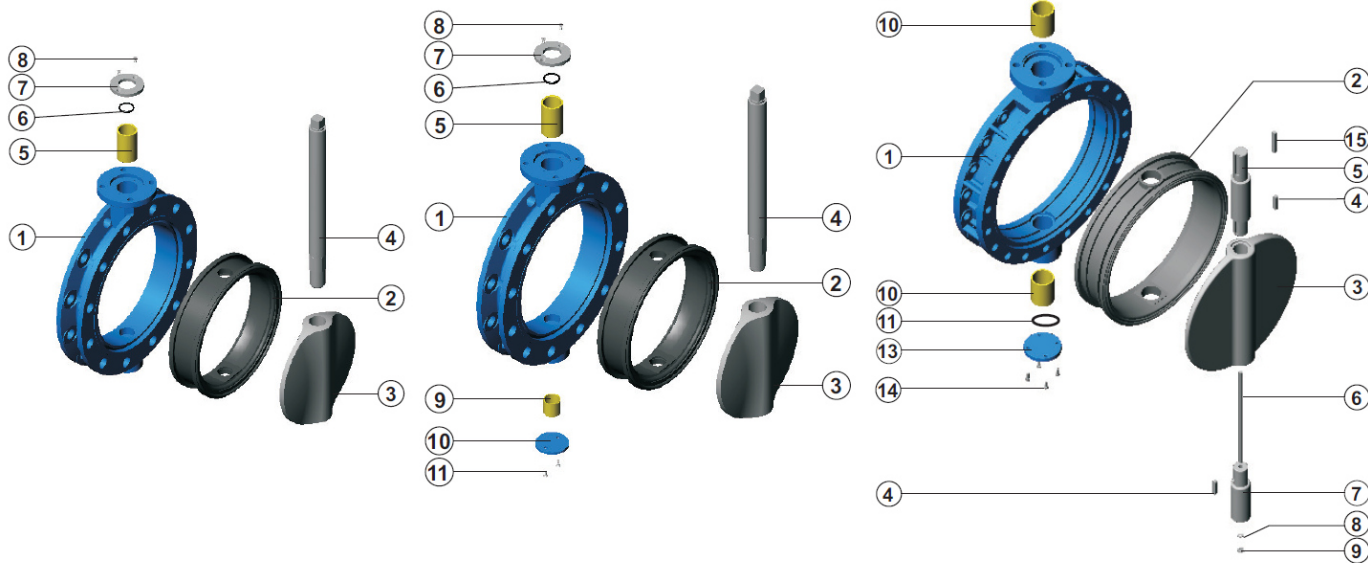
Suitable for flanges PN 10 (PN 16 on request)

Betriebstemperatur

Max. 120°C

Temperature Range

Max. 120°C



Parts List & Material Specification

Ø100-200

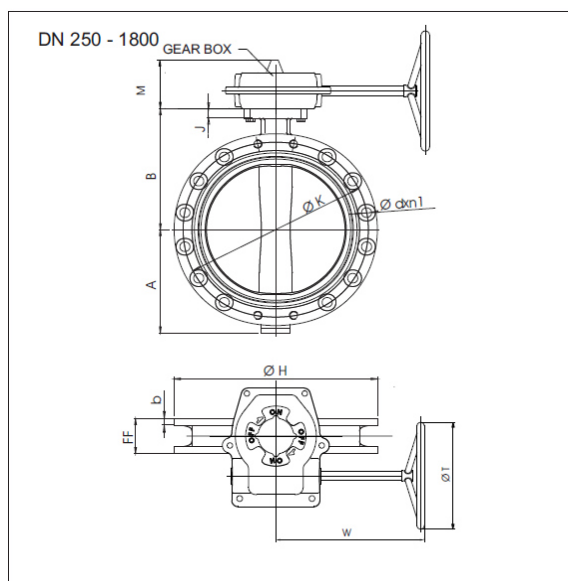
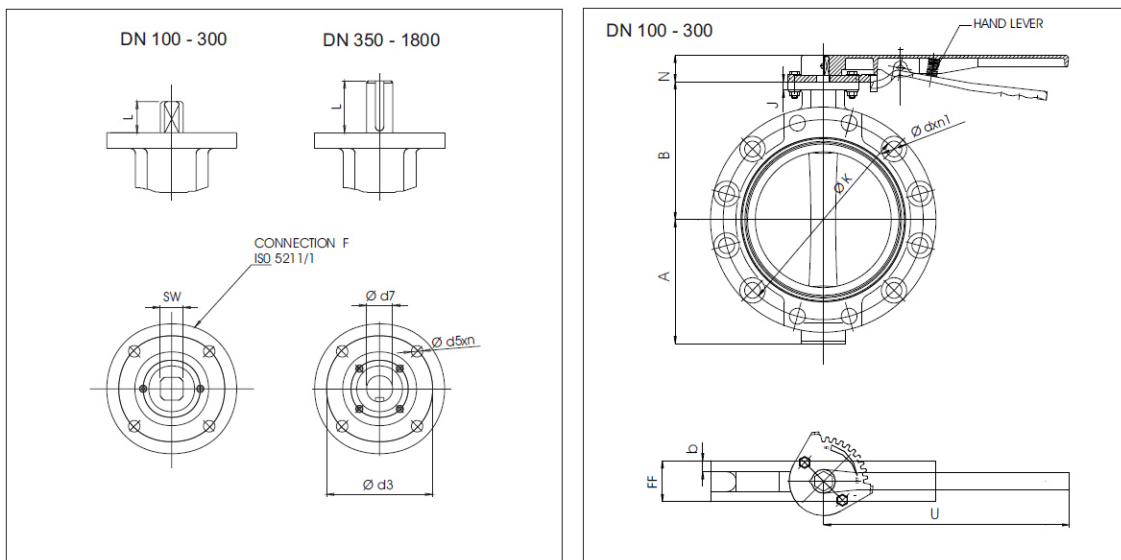
Ø250-300

Ø350-1800

P.NO	PART NAME	MATERIAL
1	Body	GGG 40-50, GGG 40.3, AI-Bz AISI 316, GS-C25
2	Body seat	EPDM, NBR, Viton, Hypalon Neopren, NR, Silicone
3	Disc	AISI 316, AI-Bz, GGG 40-50, GS-C25, UB 6
4	Stem	AISI 304, AISI 316, AISI 420
5	Bearing	SB (Carbon Steel + PTFE)
6	O-Ring	NBR
7	Washer	St-37, A-2
8	Bolt	8.8, A-2

P.NO	PART NAME	MATERIAL
1	Body	GGG 40-50, GGG 40.3, AI-Bz AISI 316, GS-C25
2	Body seat	EPDM, NBR, Viton, Hypalon Neopren, NR, Silicone
3	Disc	AISI 316, AI-Bz, GGG 40-50, GS-C25, UB 6
4	Stem	AISI 304, AISI 316, AISI 420
5	Bearing	SB (Carbon Steel + PTFE)
6	O-Ring	NBR
7	Washer	St-37, A-2
8	Bolt	8.8, A-2
9	Bearing	SB (Carbon Steel + PTFE)
10	Lower Cover	St-37
11	Bolt	8.8, A-2

P.NO	PART NAME	MATERIAL
1	Body	GGG 40-50, GGG 40.3, AI-Bz AISI 316, GS-C25
2	Body seat	EPDM, NBR, Viton, Hypalon, Neopren, NR, Silicone
3	Disc	AISI 316, AI-Bz, GGG 40-50, GS-C25, UB 6
4	Key	C 45 k
5	Upper stem	AISI 304, AISI 316, AISI 420
6	Connecting stud	AISI 304, AISI 316, AISI 420
7	Lower stem	AISI 304, AISI 316, AISI 420
8	Washer	St-37, A-2
9	Nut	6.8, A-2
10	Bearing	SB (Carbon Steel + PTFE)
11	O-ring	EPDM, NBR
12	Upper cover	C 45
13	Lower cover	C 45
14	Bolt	8.8, A-2
15	Key	C 45 k



DN	A	B	b	FF	Ø H	J	M	N	U	W	Ø T	F	Ø d5xn	□ SW Ø d7	L	Ø d3	PN 10			PN 16		
																	Ø K	Ø d	n1	Ø K	Ø d	n1
Ø 100	110	155	-	52	220	14	50	37	260	159	200	07	9x4	□ 14	20	70	180	Ø 19	8	180	Ø 19	8
Ø 125	123	158	-	56	250	14	50	37	260	159	200	07	9x4	□ 14	20	70	210	Ø 19	8	210	Ø 19	8
Ø 150	141	185	-	56	285	14	50	37	350	159	200	07	9x4	□ 17	22	70	240	Ø 23	8	210	Ø 23	8
Ø 200	174	213	-	60	340	15	50	37	350	159	200	07	9x4	□ 17	22	70	295	Ø 23	8	295	Ø 23	12
Ø 250	212	245	22	68	400	15	75	47	400	238	260	10	11x4	□ 22	32	102	350	Ø 23	12	355	Ø 28	12
Ø 300	243	282	24.5	78	455	15	75	47	400	238	260	10	11x4	□ 27	32	102	400	Ø 23	12	410	Ø 28	12
Ø 350	300	318	26.5	78 / 92	515	28	102	-	-	315	400	14	17.5x4	Ø 36	75	140	460	Ø 23	16	470	Ø 28	16
Ø 400	326	362	28	102	575	28	102	-	-	315	400	14	17.5x4	Ø 36	75	140	515	Ø 28	16	525	Ø 31	16
Ø 450	365	410	30	114	635	26	102	-	-	315	400	16	22x4	Ø 45	92	165	565	Ø 28	20	585	Ø 31	20
Ø 500	408	435	31.5	127	710	26	102	-	-	315	400	16	22x4	Ø 45	92	165	620	Ø 28	20	650	Ø 34	20
Ø 600	482	519	36	154	835	26	102	-	-	315	600	16	22x4	Ø 60	92	165	725	Ø 31	20	770	Ø 37	20
Ø 700	564	548	39.5	165	905	32	135	-	-	414	600	25	18x8	Ø 68	118	254	840	Ø 31	24	840	Ø 37	24
Ø 800	587	587	43	180 / 190	1020	35	135	-	-	414	600	25	18x8	Ø 80	118	254	950	Ø 34	24	950	Ø 41	24
Ø 900	655	661	46.5	190 / 203	1115	35	225	-	-	525	600	30	22x8	Ø 80	200	298	1050	Ø 34	28	1050	Ø 41	28
Ø 1000	718	751	50	216	1255	35	225	-	-	525	600	30	22x8	Ø 100	200	298	1160	Ø 37	28	1170	Ø 44	28
Ø 1200	985	1005	57	254	1455	40	225	-	-	525	600	30	22x8	Ø 100	200	298	1380	Ø 41	32	1390	Ø 50	32
Ø 1400	1017	1030	60	279	1685	60	225	-	-	525	600	40	38x8	Ø 155	200	406	1590	Ø 44	36	1590	Ø 50	36
Ø 1600	1145	1160	65	318	1930	60	225	-	-	525	600	48	38x12	Ø 160	200	483	1820	Ø 50	40	1820	Ø 57	40
Ø 1800	1172	1260	70	356	2130	60	225	-	-	525	600	48	38x12	Ø 150	200	483	2020	Ø 50	44	2020	Ø 57	44

FREE SHAFT Weight (kg)	HAND LEVER		GEAR BOX			
	Type	Weight (kg)	PN 10		PN 16	
			Type	Weight (kg)	Type	Weight (kg)
12.0	92-200	0.800	AST-20	2,900	AST-20	2,900
14.0	92-200		AST-20			
17.0	92-300		AST-20			
25.0	92-300	0.900	AST-20	8,220	AST-20	8,220
40.0	92-400		AST-30			
46.0	92-400		AST-30			
55.0	-	-	AST-40	12,240	AST-40	12,240
81.0	-	-	AST-40		AST-60	17,900
140.0	-	-	AST-60		AST-80	32,660
150.0	-	-	AST-60	AST-80		
201.0	-	-	AST-80	32,660	AB1950NHR	45,000
292.0	-	-	AB1950NHR	45,000	AB6800NLT/SP4	70,000
365.0	-	-	AB6800NLT/SP4	70,000	AB6800NLT/SP4	
506.0	-	-	AB6800N/SP4	70,000	AB6800N/SP6	81,000
700.0	-	-	AB6800N/SP6	81,000	A250N/SP9	225,000
1.400.0	-	-	A250N/SP9	225,000	IW9RA	262,000
-	-	-	IW82	222,000	IW9RA	262,000
-	-	-	IW11	570,000	IW11	570,000
-	-	-	IW11	570,000	IW11	570,000